



Connecting Devices, Enterprises, and People

BACnet Over IP Simulation System (**BOSS**)

Introduction

BOSS Simulator

Softdel's BOSS Simulator provides a comprehensive ability to effectively troubleshoot BACnet functionality & interoperability by simulation of virtual devices, properties & service configurations.

BOSS enables developers & system integrators to configure, monitor & issue service commands to physical & virtual devices on the BACnet network.



BOSS

Comprehensive Solution for BACnet Network Simulation

Key Features

- BACnet PR-19 Compliant
- Discover & browse BACnet devices
- Generate service commands, monitor property values
- Carry out product testing (BACnet specific)
- Simulate scheduling, trending, alarms & COV

Benefits

- Improved predictability – Cost, Quality & Time
- Reduced travel & time spent at end-customer sites
- Early identification of issues, hence cost saving
- Single PC & multi-virtual devices + configurations

50+ OEM Clients **300+ Users**



BOSS

Simulator Feature List

Discover

Automatically discover the BACnet (IP, Virtual BACnet device, & MS/TP, (via router)) devices, objects and their properties in your network

Browse

See the objects and devices in an easy-to-use format

Monitor

Set and monitor properties of the discovered objects

Control

Edit the values of properties within the discovered devices

Simulate

Simulate a deployed BACnet environment by configuring a custom set of BACnet service commands to generate periodic network traffic

BOSS Simulator Supports

- Supports ANSI X3.4, IBM/MS DBCS (code page 850) and ISO8859-1
- Discovers BACnet/IP, BACnet MS/TP (via router) and Virtual BACnet devices
- Discovers up to 1,000 BACnet devices
- Supports up to protocol revision 19 devices

Features	BOSS Simulator
Protocol revision support	PR-19
Simulate BACnet/IP devices virtually	✓
Discover and browse BACnet devices	✓
Object browser	✓
Configurable BACnet devices	✓
Automatic network traffic generator	✓
Monitor object property values	✓
Set property value of discovered objects	✓
Segmentation support	✓
BBMD Support	✓
Support for both A-side and B-side services	✓
User configurable simulation of PVs (Present Values)	✓
Supports IBM MS DBCS, ANSI X3.4 character sets	✓
Virtual router	✓
Real time logging, monitoring & analysis of BACnet commands and responses	✓
Backup and restore support	✓

BOSS

Supported Objects (Server Profile)

- Device
- Analog Input
- Analog Output
- Analog Value
- Binary Input
- Binary Output
- Binary Value
- Multi State Input
- Multi State Output
- Multi State Value
- Notification Class
- Event Enrollment
- Calendar
- Schedule
- File
- Trend Log
- Trend Log Multiple
- Loop
- Accumulator
- Network Port
- Life Safety Point
- Life Safety Zone
- Averaging
- Command
- Group
- Program
- Load Control
- Structured View
- Character String Value
- Date Time Value
- Octet String Value
- Lighting Output
- Binary Lighting Output
- Timer
- Elevator Group

BOSS

Supported Objects (Server Profile)

Service Classification	Features	Initiate	Execute
Alarm & Event	Acknowledge Alarm	✗	✓
	Confirmed COV Notification	✓	✓
	Unconfirmed COV Notification	✓	✓
	Confirmed Event Notification	✓	✗
	Unconfirmed Event Notification	✓	✗
	Get Alarm Summary	✓	✓
	Get Enrollment Summary	✗	✓
	Get Event Information	✓	✓
	Subscribe COV	✓	✓
	Subscribe COV Property	✗	✗
File Access	Atomic Read File	✗	✓
	Atomic Write File	✗	✓
Object Access	Add List Element	✗	✓
	Remove List Element	✗	✓
	Create Object	✗	✓

Service Classification	Features	Initiate	Execute
Object Access	Delete Object	✗	✓
	Read Property	✓	✓
	Read Property Multiple	✓	✓
	Read Range	✓	✓
	Write Property	✓	✓
	Write Property Multiple	✗	✓
	Device Communication Control	✓	✓
	Reinitialize Device	✗	✓
	Time Synchronization	✓	✓
	UTC Time Synchronization	✓	✓
Remote Device Management	Who-Is	✓	✓
	I-Am	✓	✓
	Who-Has	✓	✓
	I-Have	✓	✓
	BBMD, Non-BBMD and FD Functionalities	✓	✓
BBMD	BBMD, Non-BBMD and FD Functionalities	✓	✓
Segmentation	"APDU Segmentation	✓	✓
	Configurable (Tx / Rx / Both / None)"		

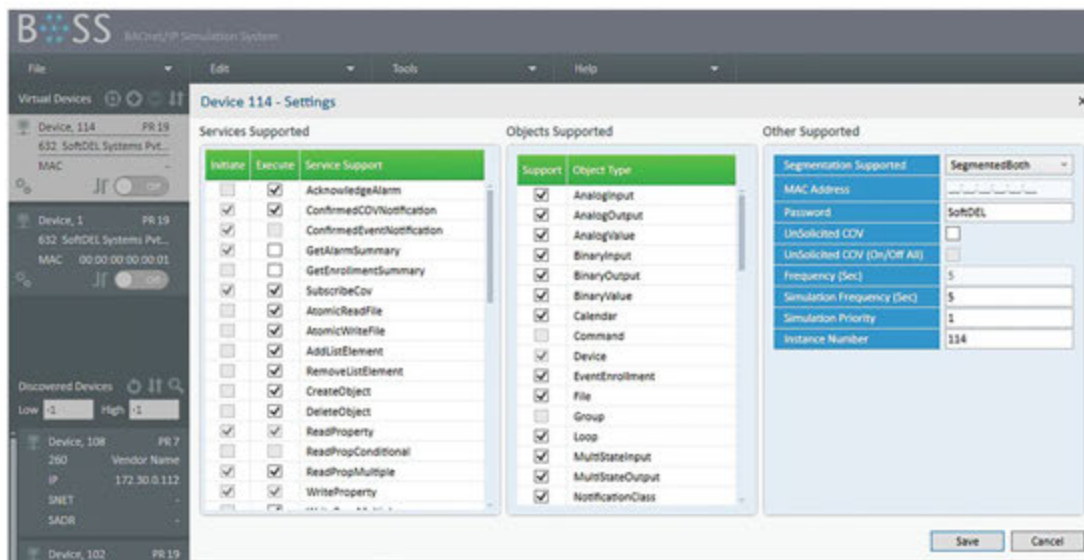


BOSS Features

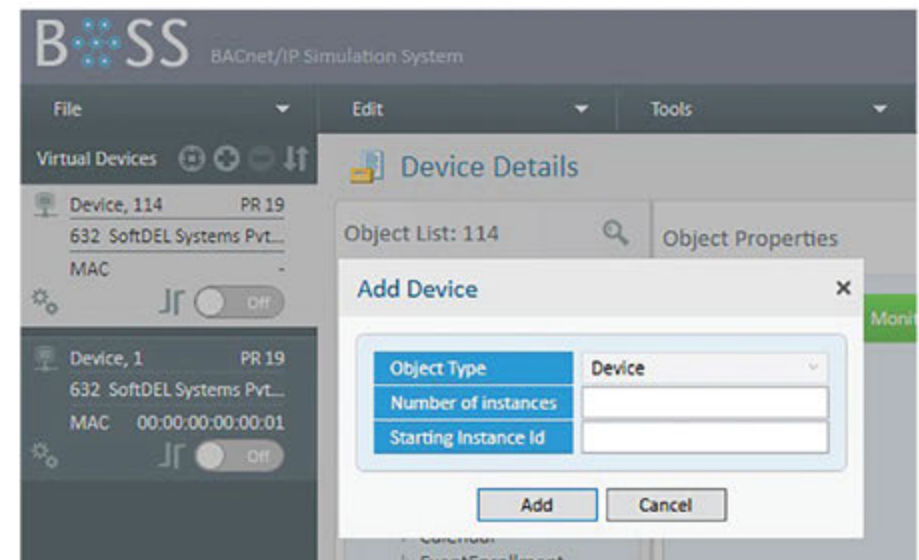
Scenario 1

Create virtual device networks

- Create and configure up to **254 standard and custom virtual devices** by selecting different services and objects
- Simulate the device on the virtual network for other devices to discover and interact



Select & configure virtual devices

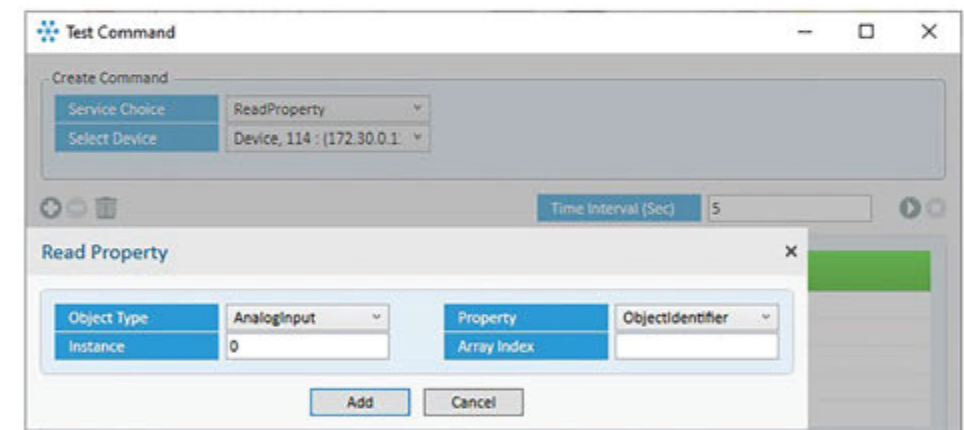
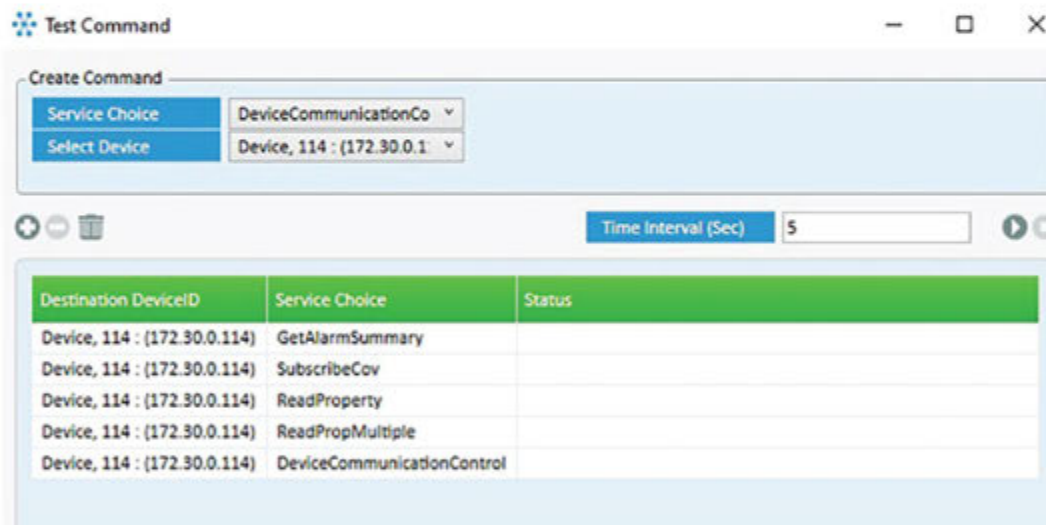


Create virtual devices

Scenario 2

Generate service commands

- Ability to send BACnet service commands to specific devices on the network



Scenario 3

Device & Object Browsing

- Scan the network and explore all accessible BACnet devices and objects within the devices
- View and modify properties of objects from virtual and discovered devices

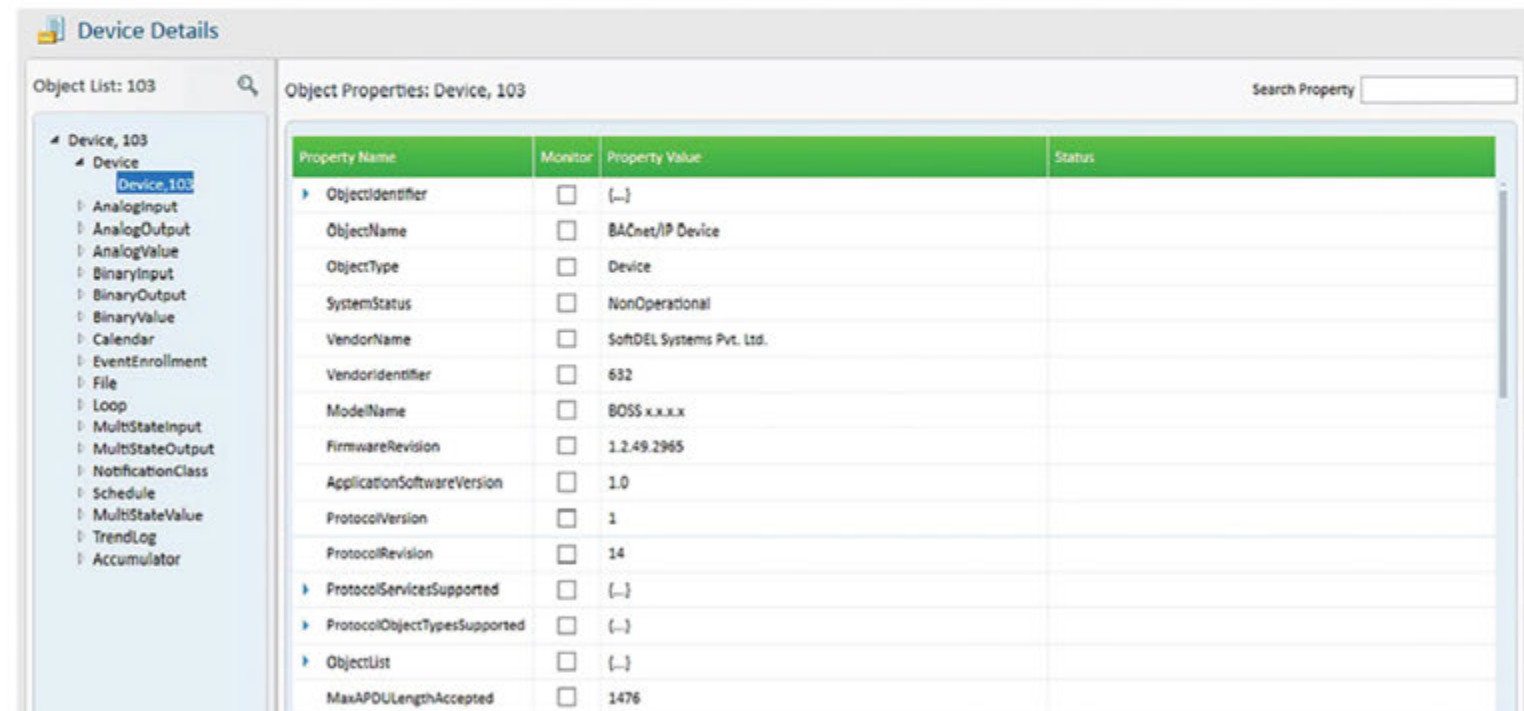


Discovered Devices

Low -1 High -1

Device ID	Vendor Name	IP	SNET	SADR	Priority
Device, 108	260	172.30.0.112	-	-	PR 7
Device, 102	632 Softdel Systems Pvt....	172.30.0.102	-	-	PR 19
Device, 111	632 Softdel Systems Pvt....	-	-	-	PR 19

Discovered BACnet devices



Device Details

Object List: 103

Object Properties: Device, 103

Search Property

Property Name	Monitor	Property Value	Status
ObjectIdentifier	<input type="checkbox"/>	[...]	
ObjectName	<input type="checkbox"/>	BACnet/IP Device	
ObjectType	<input type="checkbox"/>	Device	
SystemStatus	<input type="checkbox"/>	NonOperational	
VendorName	<input type="checkbox"/>	SoftDEL Systems Pvt. Ltd.	
VendorIdentifier	<input type="checkbox"/>	632	
ModelName	<input type="checkbox"/>	BOSS x.x.x.x	
FirmwareRevision	<input type="checkbox"/>	1.2.49.2965	
ApplicationSoftwareVersion	<input type="checkbox"/>	1.0	
ProtocolVersion	<input type="checkbox"/>	1	
ProtocolRevision	<input type="checkbox"/>	14	
ProtocolServicesSupported	<input type="checkbox"/>	[...]	
ProtocolObjectTypesSupported	<input type="checkbox"/>	[...]	
ObjectList	<input type="checkbox"/>	[...]	
MaxAPDULengthAccepted	<input type="checkbox"/>	1476	

Objects & Properties of Selected discovered device

Scenario 4

Monitor List

- Select and continuously monitor changes in values in object properties of virtual and discovered devices



The screenshot shows a window titled "Monitor List" with a table containing the following data:

Device ID / Vendor Name	Instance ID / Property Name	Property Value	Status
Device, 103 SoftDEL Systems Pvt. Ltd.	Device, 103 FirmwareRevision	1.2.49.2965	
Device, 103 SoftDEL Systems Pvt. Ltd.	AnalogInput, 0 PresentValue	10	
Device, 103 SoftDEL Systems Pvt. Ltd.	AnalogOutput, 0 OutOfService	False	
Device, 103 SoftDEL Systems Pvt. Ltd.	Calendar, 0 PresentValue	False	
Device, 103 SoftDEL Systems Pvt. Ltd.	BinaryInput, 0 Polarity	Normal	
Device, 103 SoftDEL Systems Pvt. Ltd.	BinaryInput, 0 AlarmValue	Active	
Device, 103 SoftDEL Systems Pvt. Ltd.	BinaryInput, 0 ChangeOfStateCount	0	
Device, 103 SoftDEL	BinaryInput, 0	SoftDEL's BACnet/IP	

At the bottom of the window, there is a control bar with the following elements:

- Select Device: All
- Go to Settings: [icon]
- Refresh Interval: 5ms.

Scenario 5

BBMD (BACnet Broadcast Management Device) support

- Explore and access multiple BACnet networks using BBMD functionality
- Configure as BBMD, Non-BBMD or FD

Broadcast Distribution Table Configuration [X]

Destination Network Information

IP Address: 172.30.0.114 Port Number: 47808

BDT Entry

IP Address	Port Number	Mask
172.30.0.114	47808	32
172.30.0.118	47808	32
172.30.0.145	47808	32
172.16.1.145	47808	32

Save Cancel

Register Foreign Device [X]

Foreign Device Entry

IP Address: 172.30.0.1082
Port Number: 47808
Time to Live (Sec): 2000

BBMD IP Address	Port Number	Time to Live	Time Remaining
172.30.0.153	47808	500	162

Close



Connecting Devices, Enterprises, and People

USA

One Dock Street Suite
201 Stamford, CT 06902
Tel: +1 475-477-0221

JAPAN

#602 Live Kudan 1-1-6
Kudan Kita,
Chiyoda ku, Tokyo
Tel: +81 3 5213 4301

INDIA

Pentagon P4
Magarpatta City
Hadapsar Pune, 411 028
Tel: + 91 20 6701 0001